

# REUSABLE FACIAL MASK: INSTRUCTIONS FOR USE



1



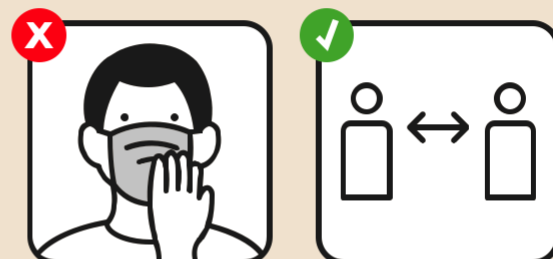
I wash my hands before wearing my mask (holding it by the straps!).

2



I cover my nose, mouth and chin.

3



I avoid touching my face or mask and maintain at least 2 metres of distance with others.

4



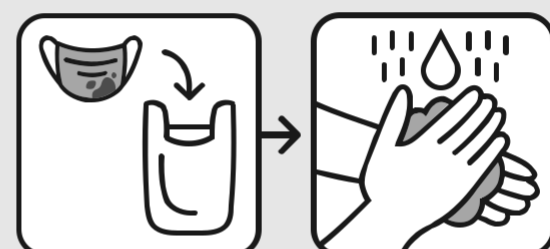
I wash my hands if I touch my mask.

5



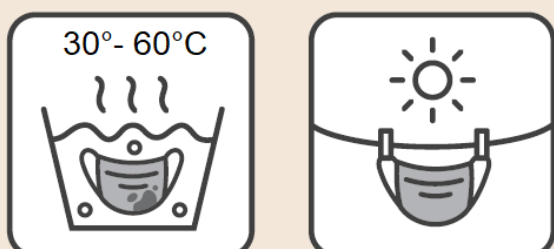
I change my mask if it gets wet or dirty.

6



If I cannot wash my mask, I store it in a sealed plastic bag.

7

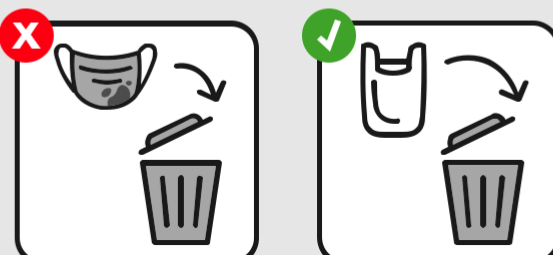


**Wash your mask:**

- every day if possible or at least every 4 days  
- at **30°- 60°C** or by hand, using hot water and soap

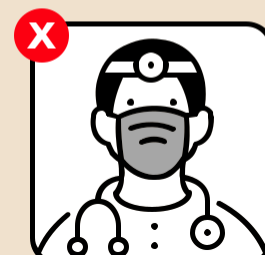
Allow to dry completely before reusing

8



I throw my bag where others cannot touch it, or I wash it with soap.

9



**THE REUSABLE FACIAL MASKS ARE NOT INTENDED FOR USE BY HEALTH WORKERS.**